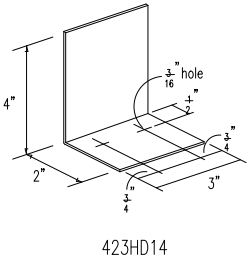
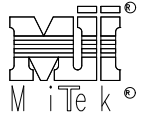
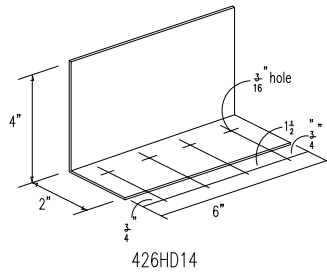


US2EMB-4

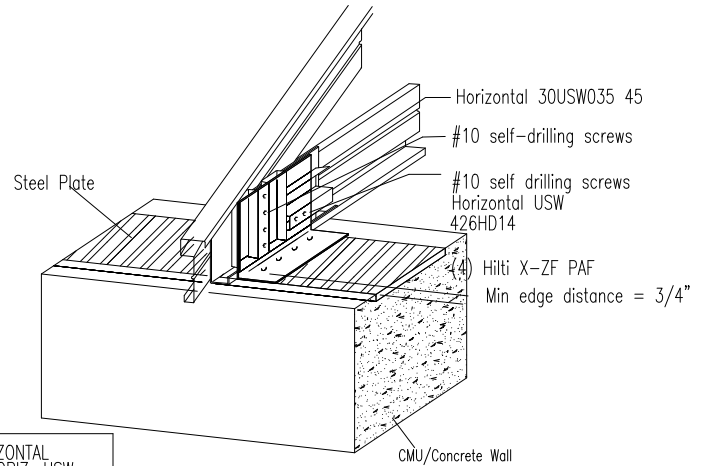
ULTRA-SPAN TRUSS UPLIFT CONNECTION TO EMBEDDED
STEEL PLATE IN CMU 426HD14



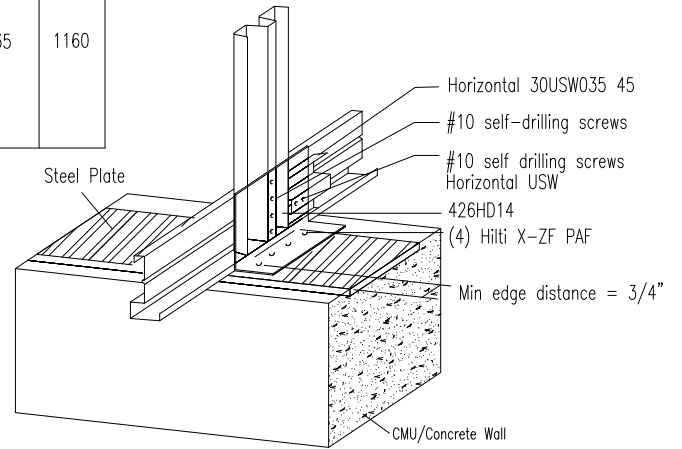
423HD14



426HD14



Web Gage	MAXIMUM UPLIFT CAPACITY (LBS)			MAX. HORIZONTAL #10 sds HORIZ. USW		
	#10 sds	1/4" Steel	3/8" Steel	1	2	3
035	3	970	970	510	835	1160
	4	1290	1290			
	5	1615	1615			
046	4	1780	2230	510	835	1160
	5	1780	2400			
057	4	1780	2400	510	835	1160



- 1) Web or heel stiffener attached with the greater of 4 - #10 sds or the quantity shown.
- 2) Minimum screw spacing = 9/16"
- 3) Uplift values include 1.33 increase for wind or seismic. No further increase is permitted. For uplifts not resulting from wind or seismic, reduce capacities to 75% of values shown.
- 4) See Fastener Manufacturer's catalog for installation requirements and application limits.
- 5) PAF fasteners to be placed thru pre-drilled holes.
- 6) Maximum horizontal reaction = 188 lbs. Maximum horizontal may be increased to 450 lbs by installing 1 - Hilti X-EDNI PAF thru bottom flange into steel.
- 7) Equivalent fasteners may be substituted for these indicated.
- 8) When truss is 2-ply, connection applied to each ply.(Capacities doubled)
- 9) Steel Plate, and it connection to CMU/Concrete wall shall be designed by a qualified designer for design loads.

Revised 7/2001

TARGET SCALE: 1 1/2" = 1'-0"

Arcat file no.: 05401014

(Mfr file no.: US2EMB-4)