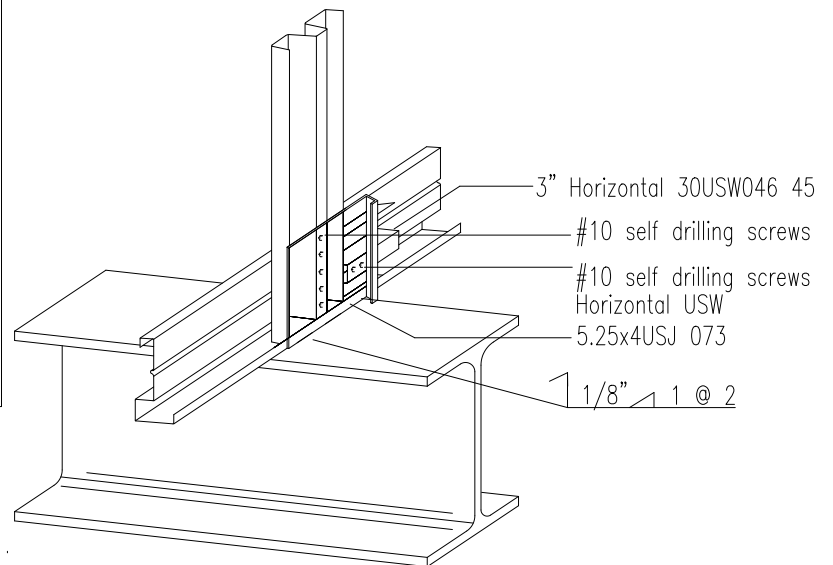


MAXIMUM UPLIFT CAPACITY			MAX. HORIZONTAL #10 sds HORIZ. USW	
Web Gage	#10 sds	Uplift(lbs)	1	2
035	2	646	745	1302
	3	970		
	4	1290		
	5	1615		
046	2	2115		
	3	1617		
	4	2225		
057	5	2800		
	2	1365		
	3	2045		
	4	2725		
	5	3400		



- 1) Web or heel stiffener attached to bottom chord as required for uplift based on gage of web and bottom chord. 5 - #10 sds may be used for all uplifts shown.
- 2) Minimum screw spacing = 9/16"
- 3) Uplift and horizontal values include 1.33 increase for wind or seismic. No further increase is permitted. For uplifts not resulting from wind or seismic, reduce capacities to 75% of values shown.
- 4) Minimum steel thickness = 1/4"
- 5) Follow AWS regulations to ensure quality welds
- 6) When truss is 2-Ply, connection applied to each ply (Capacities doubled).
- 7) Attach horizontal 30USW046 45 to bottom chord w/6-#10 sds