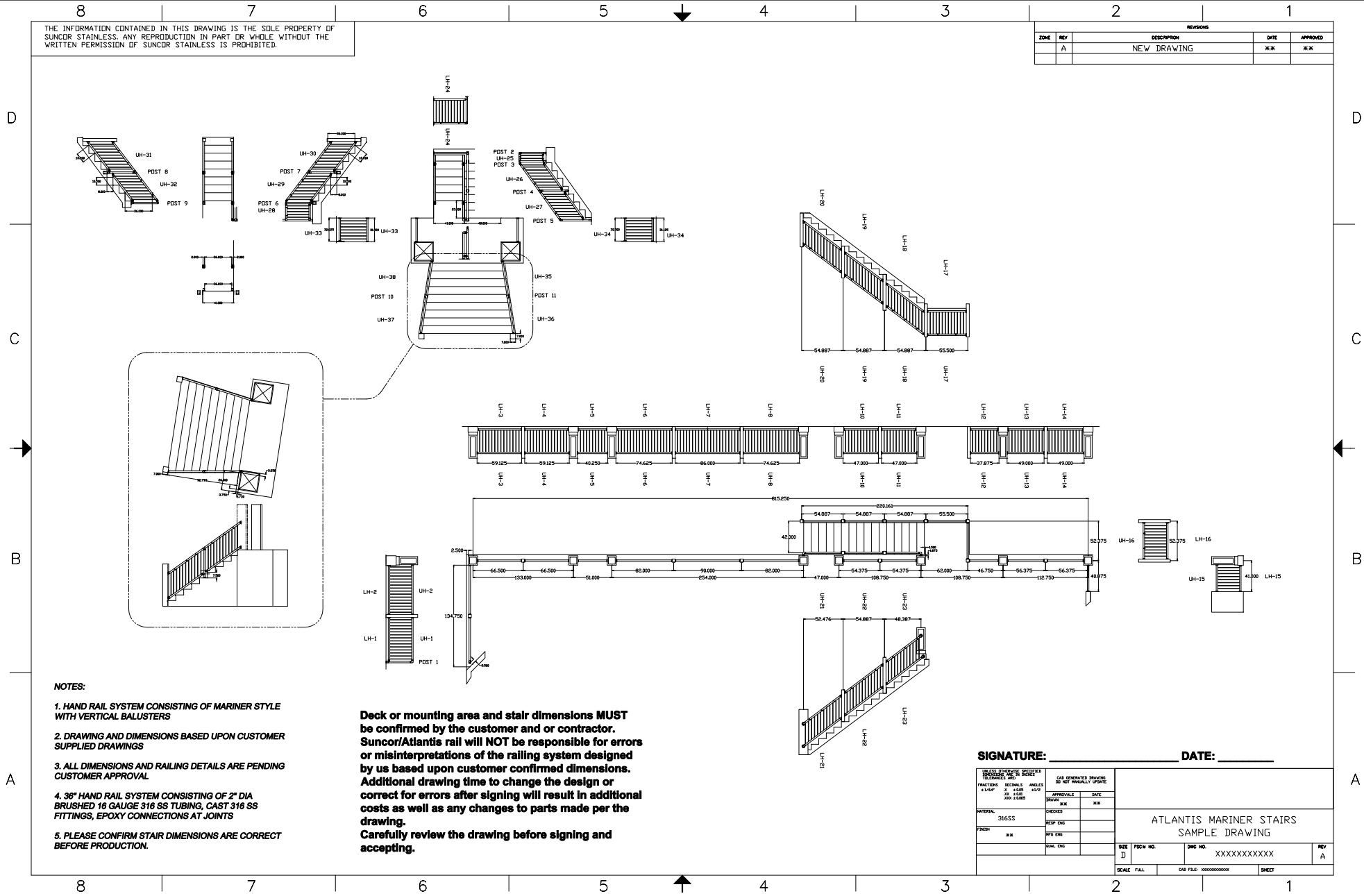


THE INFORMATION CONTAINED IN THIS DRAWING IS THE SOLE PROPERTY OF SUNCOR STAINLESS. ANY REPRODUCTION IN PART OR WHOLE WITHOUT THE WRITTEN PERMISSION OF SUNCOR STAINLESS IS PROHIBITED.

ZONE	REV	REVISIONS		DATE	APPROVED
		DESCRIPTION			
A		NEW DRAWING		**	**



- NOTES:**
1. HAND RAIL SYSTEM CONSISTING OF MARINER STYLE WITH VERTICAL BALUSTERS
 2. DRAWING AND DIMENSIONS BASED UPON CUSTOMER SUPPLIED DRAWINGS
 3. ALL DIMENSIONS AND RAILING DETAILS ARE PENDING CUSTOMER APPROVAL
 4. 36" HAND RAIL SYSTEM CONSISTING OF 2" DIA BRUSHED 16 GAUGE 316 SS TUBING, CAST 316 SS FITTINGS, EPOXY CONNECTIONS AT JOINTS
 5. PLEASE CONFIRM STAIR DIMENSIONS ARE CORRECT BEFORE PRODUCTION.

Deck or mounting area and stair dimensions MUST be confirmed by the customer and or contractor. Suncor/Atlantis rail will NOT be responsible for errors or misinterpretations of the railing system designed by us based upon customer confirmed dimensions. Additional drawing time to change the design or correct for errors after signing will result in additional costs as well as any changes to parts made per the drawing. Carefully review the drawing before signing and accepting.

SIGNATURE: _____ **DATE:** _____

<small>UNLESS OTHERWISE SPECIFIED DIMENSIONS ARE IN INCHES FRACTIONS DECIMALS ANGLES 1/16" 0.0625 45° 1/4"</small>		<small>CAD GENERATED DRAWING DO NOT MANUALLY UPDATE</small>	
<small>MATERIAL</small> 316SS	<small>CHECKED</small> <small>DESIGNED</small> <small>BY</small> <small>DATE</small>	<small>APPROVED</small> <small>DATE</small>	<small>DATE</small>
<small>FINISH</small> BK	<small>REV. ENG.</small> <small>SUP. ENG.</small>	<small>DATE</small>	<small>DATE</small>
<small>SCALE</small> FULL		<small>CAD FILE</small> XXXXXXXXXXXX	<small>SHEET</small>

**ATLANTIS MARINER STAIRS
SAMPLE DRAWING**

SIZE D FIG. NO. DWG. NO. XXXXXXXXXXXX REV. A