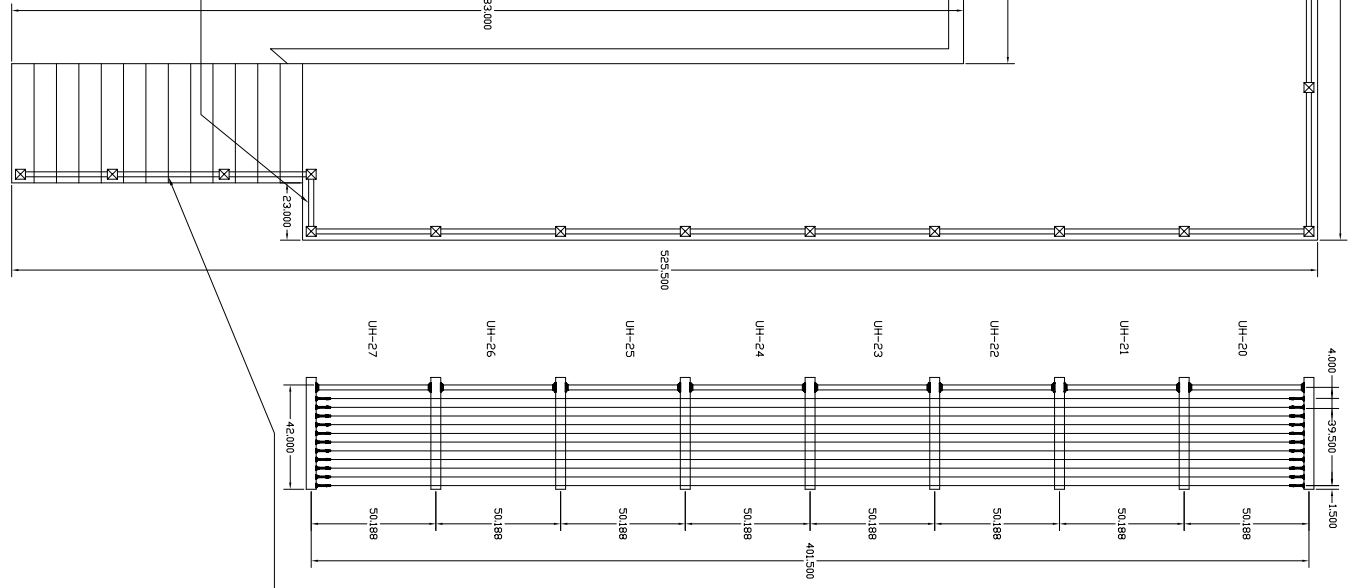
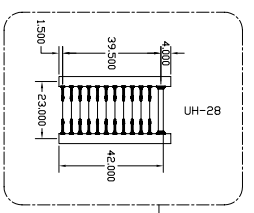
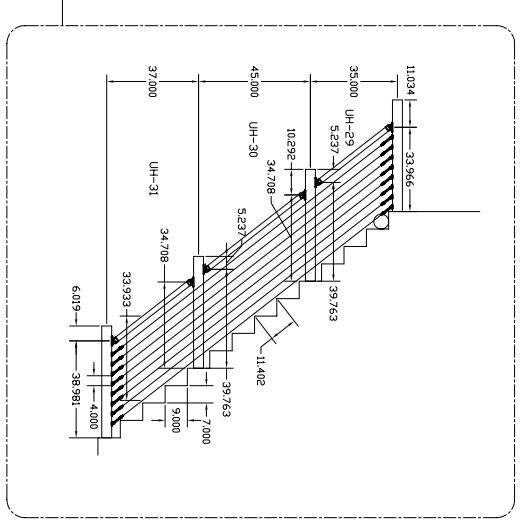
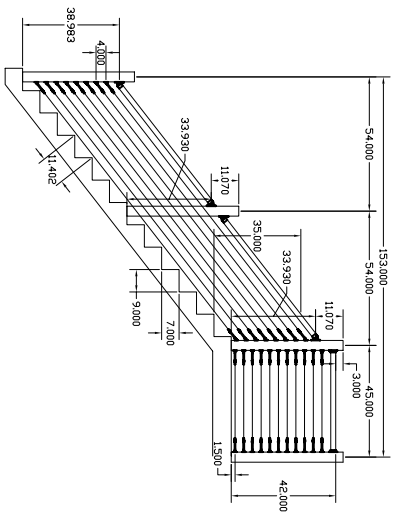
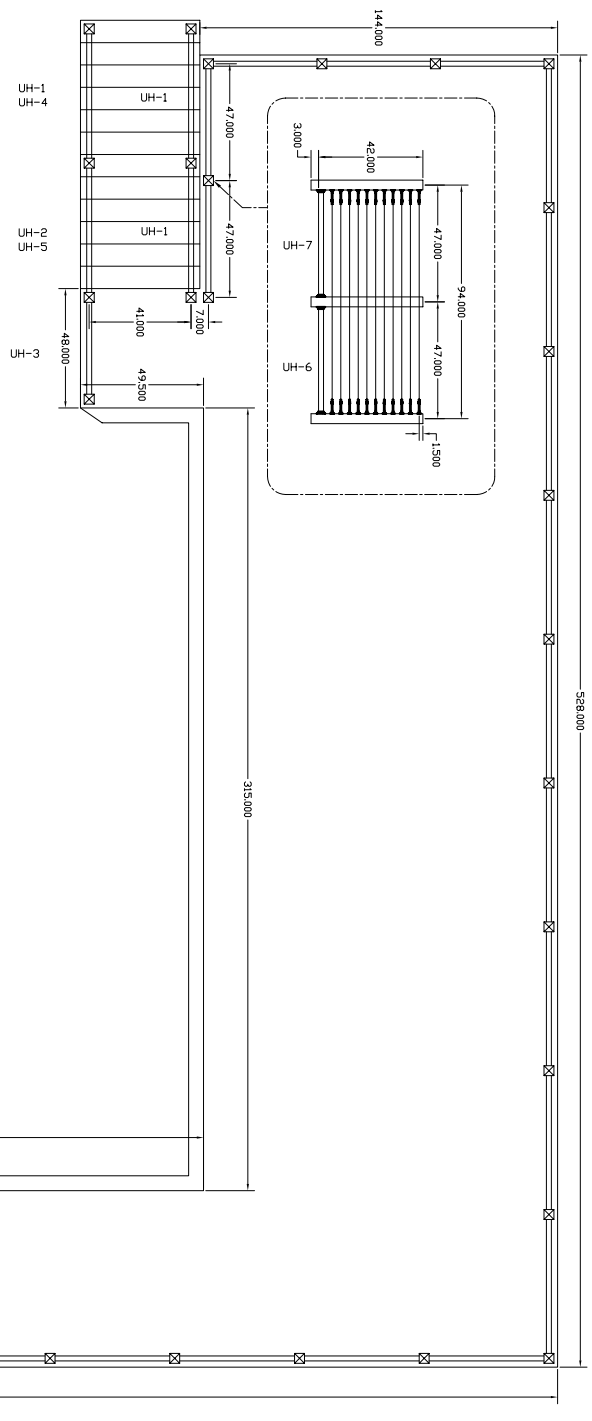
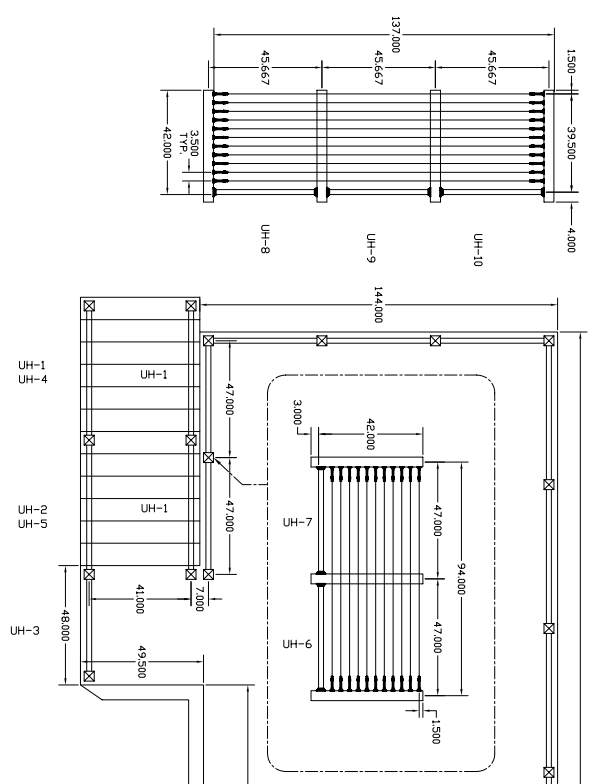
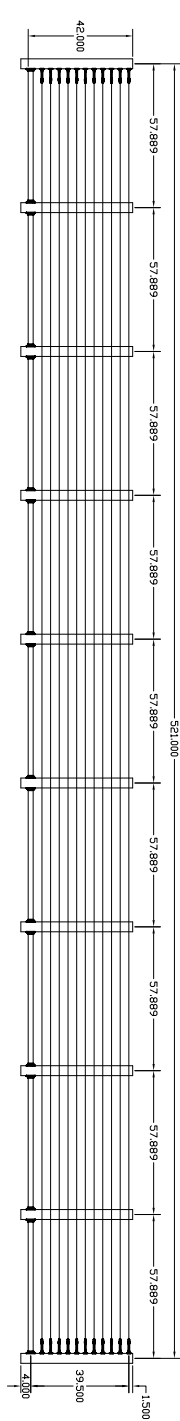


THE INFORMATION CONTAINED IN THIS DRAWING IS THE SOLE PROPERTY OF SUNCOR/ATLANTIS RAIL SYSTEMS. REPRODUCTION OF THIS DRAWING WITHOUT THE WRITTEN PERMISSION OF SUNCOR/ATLANTIS RAIL SYSTEMS IS PROHIBITED.

ZONE	REV	DESCRIPTION	DATE	APPROVED
A	-			
B	-			



SIGNATURE \_\_\_\_\_ DATE \_\_\_\_/\_\_\_\_/\_\_\_\_

- NOTES:
1. HAND RAIL SYSTEM CONSISTING OF SUNRAIL STYLE WITH HORIZONTAL WIRE ROPE.
  2. DRAWING AND DIMENSIONS BASED UPON CUSTOMER SUPPLIED DRAWINGS
  3. ALL DIMENSIONS AND RAILING DETAILS ARE PENDING CUSTOMER APPROVAL
  4. 42" HAND RAIL SYSTEM CONSISTING OF 2" DIA BRUSHED 16 GAUGE 316 SS TUBING, CAST 316 SS FITTINGS, EPOXY CONNECTIONS AT JOINTS

<p>UNLESS OTHERWISE SPECIFIED DIMENSIONS ARE IN INCHES AND DECIMALS ARE TO NEAREST 0.0001</p>		<p>DATE GENERATED: 2018-08-14 10:00 AM</p>	
<p>DESIGNER: J. J. BROWN</p>		<p>CHECKED: J. J. BROWN</p>	
<p>MATERIAL: 316 SST</p>		<p>FINISH: 42" BRUSHED</p>	
<p>SCALE: 1/4" = 1'-0"</p>		<p>SIZE: D</p>	
<p>ATLANTIS RAIL SYSTEMS</p>		<p>ATLANTIS NAUTILUS 2 STAIRS SAMPLE DRAWING</p>	
<p>DATE: 2018-08-14 10:00 AM</p>		<p>REV: A</p>	



8 7 6 5 4 3 2 1