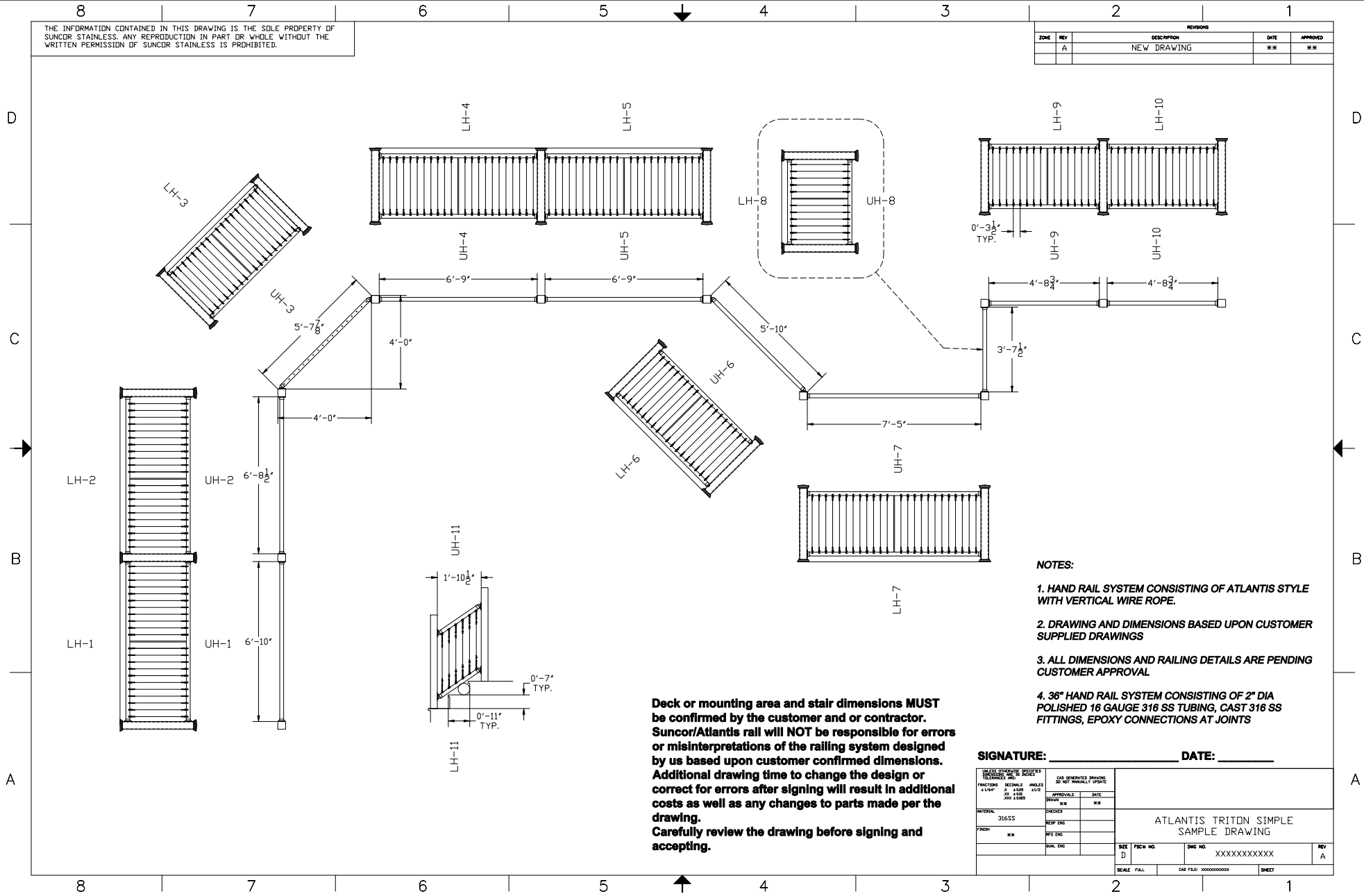


THE INFORMATION CONTAINED IN THIS DRAWING IS THE SOLE PROPERTY OF SUNCOR STAINLESS. ANY REPRODUCTION IN PART OR WHOLE WITHOUT THE WRITTEN PERMISSION OF SUNCOR STAINLESS IS PROHIBITED.

REVISIONS				
ZONE	REV	DESCRIPTION	DATE	APPROVED
A		NEW DRAWING	**	**



- NOTES:**
1. HAND RAIL SYSTEM CONSISTING OF ATLANTIS STYLE WITH VERTICAL WIRE ROPE.
 2. DRAWING AND DIMENSIONS BASED UPON CUSTOMER SUPPLIED DRAWINGS
 3. ALL DIMENSIONS AND RAILING DETAILS ARE PENDING CUSTOMER APPROVAL
 4. 36" HAND RAIL SYSTEM CONSISTING OF 2" DIA POLISHED 16 GAUGE 316 SS TUBING, CAST 316 SS FITTINGS, EPOXY CONNECTIONS AT JOINTS

Deck or mounting area and stair dimensions MUST be confirmed by the customer and or contractor. Suncor/Atlantis rail will NOT be responsible for errors or misinterpretations of the railing system designed by us based upon customer confirmed dimensions. Additional drawing time to change the design or correct for errors after signing will result in additional costs as well as any changes to parts made per the drawing. Carefully review the drawing before signing and accepting.

SIGNATURE: _____ **DATE:** _____

<small> CHECK DIMENSIONS SHOWN (EXCEPT AS NOTED) FRACTIONS DECIMALS ANGLES 1/16" 2/32" 1/8" 1/4" 3/8" 1/2" 5/8" 3/4" 7/8" 1" </small>		<small> CAD GENERATED DRAWING DO NOT MANUALLY UPDATE </small>	
<small> APPROVALS DRAWN BY CHECKED BY DATE </small>	<small> APPROVALS DATE </small>	ATLANTIS TRITON SIMPLE SAMPLE DRAWING	
<small> MATERIAL 316SS </small>	<small> CHECKED REVISIONS DATE </small>	<small> SIZE D </small>	<small> DRAWING NO. XXXXXXXXXXXX </small>
<small> FINISH ** </small>	<small> DATE ** </small>	<small> SCALE FULL </small>	<small> SHEET XXXXXXXXXXXX </small>