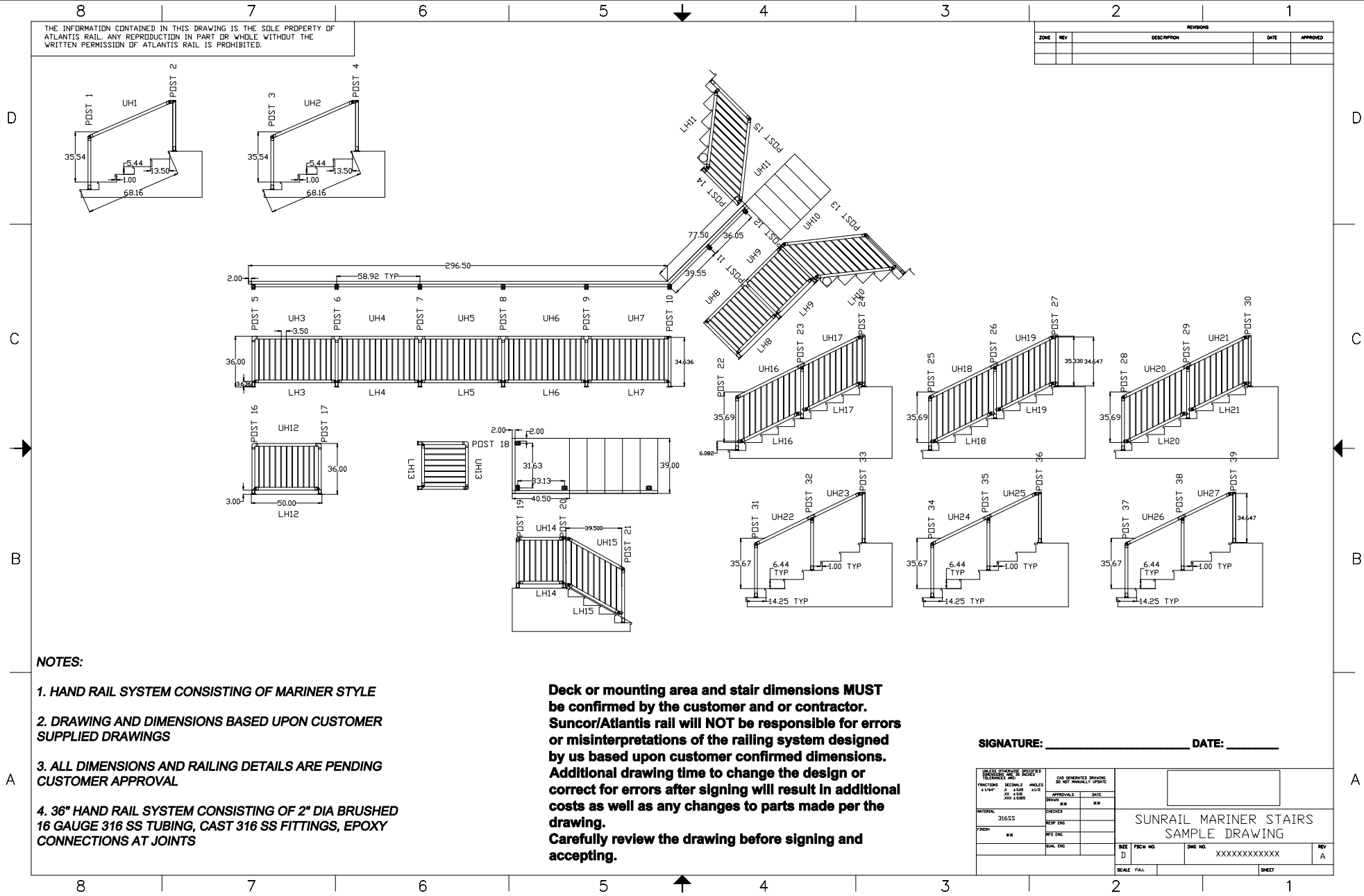


THE INFORMATION CONTAINED IN THIS DRAWING IS THE SOLE PROPERTY OF ATLANTIS RAIL. ANY REPRODUCTION IN PART OR WHOLE WITHOUT THE WRITTEN PERMISSION OF ATLANTIS RAIL IS PROHIBITED.

REVISIONS				
ZONE	REV	DESCRIPTION	DATE	APPROVED



NOTES:

1. HAND RAIL SYSTEM CONSISTING OF MARINER STYLE
2. DRAWING AND DIMENSIONS BASED UPON CUSTOMER SUPPLIED DRAWINGS
3. ALL DIMENSIONS AND RAILING DETAILS ARE PENDING CUSTOMER APPROVAL
4. 36" HAND RAIL SYSTEM CONSISTING OF 2" DIA BRUSHED 16 GAUGE 316 SS TUBING, CAST 316 SS FITTINGS, EPOXY CONNECTIONS AT JOINTS

Deck or mounting area and stair dimensions MUST be confirmed by the customer and or contractor. Suncor/Atlantis rail will NOT be responsible for errors or misinterpretations of the railing system designed by us based upon customer confirmed dimensions. Additional drawing time to change the design or correct for errors after signing will result in additional costs as well as any changes to parts made per the drawing. Carefully review the drawing before signing and accepting.

SIGNATURE: _____ DATE: _____

<small>UNLESS OTHERWISE SPECIFIED DIMENSIONS ARE IN INCHES</small>		<small>FOR GENERATED DRAWING DO NOT MANUALLY UPDATE</small>	
<small>FRACTIONS 1/16" 3/32" 1/8" 3/16" 1/4" 3/8" 1/2" 5/8" 3/4" 7/8" 1"</small>	<small>DECIMALS 0.125 0.25 0.375 0.5 0.625 0.75 0.875 1</small>	<small>ANGLES 15° 30° 45° 60° 90° 120° 135° 150° 180°</small>	<small>DATE</small>
<small>MATERIAL</small> 316SS	<small>CHECKED</small> RESP ENG	<small>APPROVALS</small> DATE	<small>DATE</small>
<small>DRAWN</small> RM	<small>REV ENG</small>	<small>DATE</small>	<small>DATE</small>
<small>SCALE</small> 1" = 1'-0"	<small>FIG. NO.</small> D	<small>DWG. NO.</small> XXXXXXXXXXXX	<small>REV</small> A

SUNRAIL MARINER STAIRS
SAMPLE DRAWING

SCALE: FULL SHEET