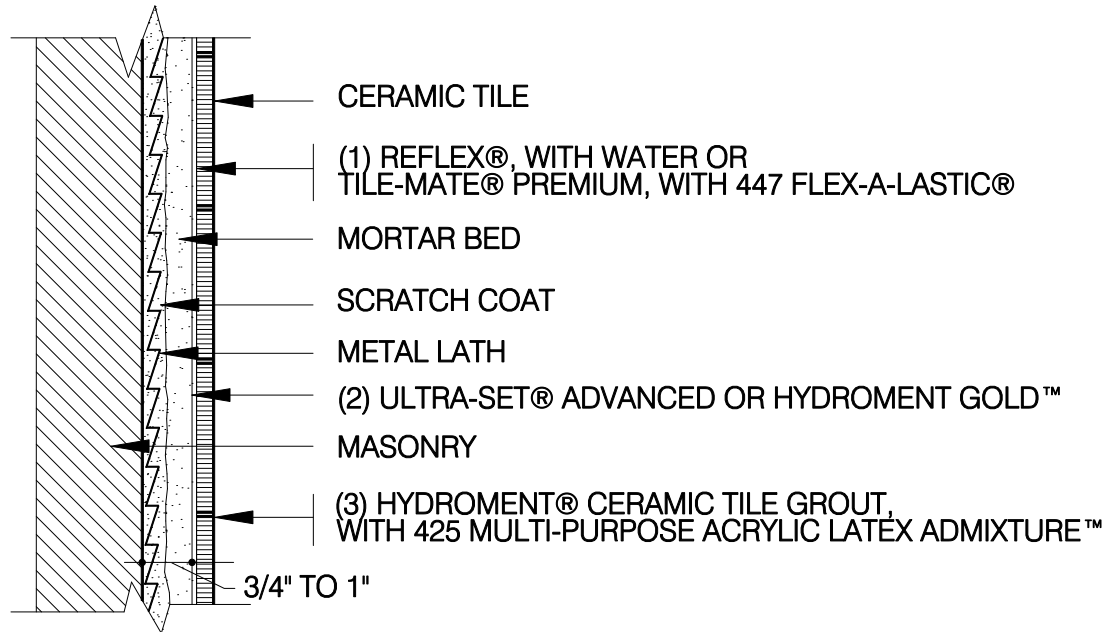


# WALLS, EXTERIOR & INTERIOR Masonry or Concrete

Cement Mortar Bed

HYD-W201-05



**(3) Hydroment® Grout Options:**

- Hydroment Ceramic Tile Grout (sanded), with 425 Multi-Purpose Acrylic Latex Admixture™
- Hydroment Ceramic Tile Grout (sanded), with water
- Hydroment Ceramic Tile Grout (sanded), with 1900™ Modified Epoxy Admixture
- Hydroment Dry Tile Grout (unsanded), with 425 Multi-Purpose Acrylic Latex Admixture
- Hydroment Dry Tile Grout (unsanded), with water

**(2) Hydroment Waterproof Membrane Options:**

- Ultra-Set® Advanced
- Hydroment Gold™
- Black-Top 90210™

**(1) Hydroment Latex Portland Cement Mortar Options:**

- ReFlex®, with water
- Single-Flex FS™, with 425 Multi-Purpose Acrylic Latex Admixture
- Single-Flex FS, with water
- Single-Flex™, with water
- Hydroment PM™, with water
- Tile-Mate® Premium, with 447 Flex-A-Lastic® Admixture
- Tile-Mate Premium, with 425 Multi-Purpose Acrylic Latex Admixture
- Tile-Mate Floor & Wall, with 447 Flex-A-Lastic Admixture
- Tile-Mate Floor & Wall, with 425 Multi-Purpose Acrylic Latex Admixture