

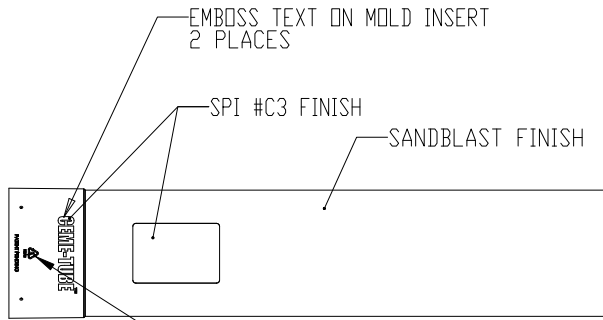
8 7 6 5 4 3 2 1

D

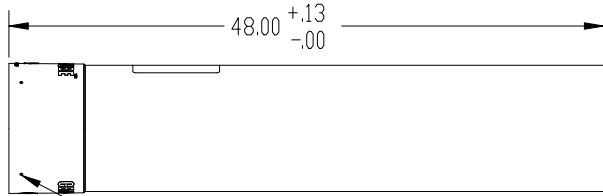
C

B

A



PLACE APPROX.  
WHERE SHOWN



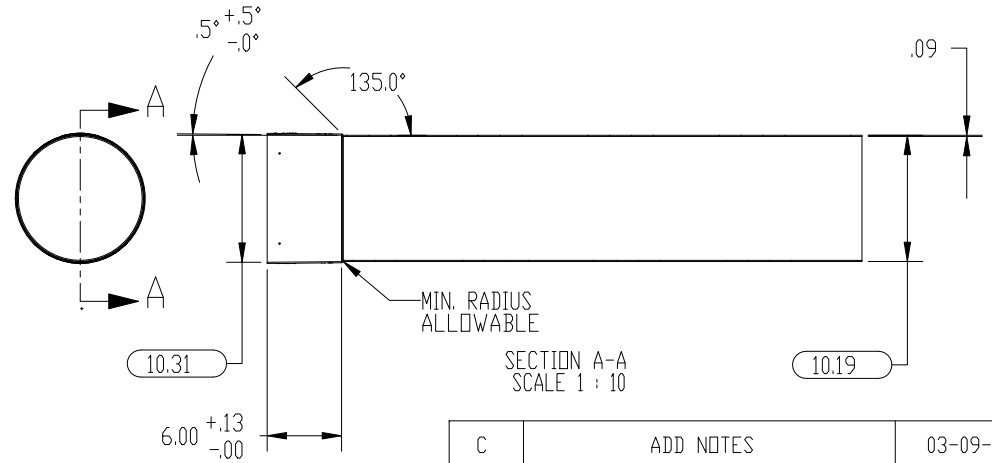
DIMPLE: .13 DEEP, .10 RADUIS  
(4) EQUALLY SPACED



DATE CODE,  
MONTH AND DAY  
PLACE APPROX.  
WHERE SHOWN

NOTES:

1. MATERIAL PROPERTIES;  
MATERIAL: HDPE  
COLOR: BLACK  
THICKNESS: .10
2. ALL EMBOSSSED TEXT HEIGHT .01
3. MAIN BODY OF PART TO HAVE SANBLAST FINISH
4. ALL EMBOSSSED TEXT TO BE SPI #C3 SURFACE FINISH
5. CRITICAL DIMENSIONS ARE CIRCLED



REV.	DESCRIPTION	DATE
C	ADD NOTES	03-09-07
B	MOVE TEXT TO COLLAR	2-25-07
A	RELEASE PART AND DRAWING	11-04-06
REVISIONS		

UNLESS OTHERWISE SPECIFIED:		NAME	DATE
DIMENSIONS ARE IN INCHES		MJK	11-04-06
TOLERANCES:			
FRACTIONAL ±			
ANGULAR: ±1			
TWO PLACE DECIMAL ±.01			
THREE PLACE DECIMAL ±.005			
INTERPRET GEOMETRIC TOLERANCING PER:			
MATERIAL	HDPE		
FINISH			
DO NOT SCALE DRAWING			

TITLE:		
CEME-TUBE, 48" X Ø 10"		
SIZE DWG. NO.	REV	
B 4810	C	
SCALE: 1:10	WEIGHT:	SHEET 1 OF 1

PROPRIETARY AND CONFIDENTIAL  
THE INFORMATION CONTAINED IN THIS  
DRAWING IS THE SOLE PROPERTY OF  
PRESTIGE SHEET METAL. ANY  
REPRODUCTION IN PART OR AS A WHOLE  
WITHOUT THE WRITTEN PERMISSION OF  
PRESTIGE SHEET METAL IS  
PROHIBITED.

8 7 6 5 4 3 2 1