

HEAD TRACK

BACK-TO-BACK JAMB STUDS.  
MEMBER SIZES & QUANTITY  
AS REQ'D PER DESIGN.

CAP OPENING SIDE OF JAMB  
WITH A SECTION OF TRACK.  
EXTEND TRACK 12" PAST TOP OF OPENING.  
ATTACHED TO JAMB w/(1)#10-16  
SCREW @ 16" o.c. IN EACH LEG.

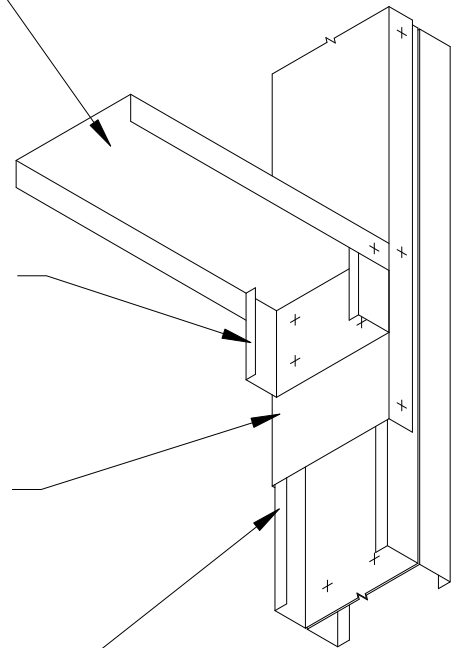
6" LONG SECTION OF STUD ATTACHED  
TO JAMB w/(4)#10-16 SCREWS.

SILL/HEAD TRACK.  
MEMBER SIZES AS  
REQ'D PER DESIGN.

6" LONG SECTION OF STUD ATTACHED  
TO JAMB w/(4)#10-16 SCREWS.

CAP OPENING SIDE OF JAMB  
WITH A SECTION OF TRACK.  
EXTEND TRACK 12" PAST TOP OF OPENING.  
ATTACHED TO JAMB w/(1)#10-16  
SCREW @ 16" o.c. IN EACH LEG.

BACK-TO-BACK JAMB STUDS.  
MEMBER SIZES & QUANTITY  
AS REQ'D PER DESIGN.



HEAD TRACK



**CLARKWESTERN**  
DESIGN

East Coast - Atlanta, GA  
20 Mansell Court East, Suite 350B  
Roswell, GA 30076

West Coast - San Diego, CA  
2035 Corte Del Nogal, Suite 165  
Carlsbad, CA 92011

Toll Free Phone: 877-832-3206

## SILL/HEAD TRACK CONNECTION

TRACK ATTACHED TO BACK-TO-BACK JAMB