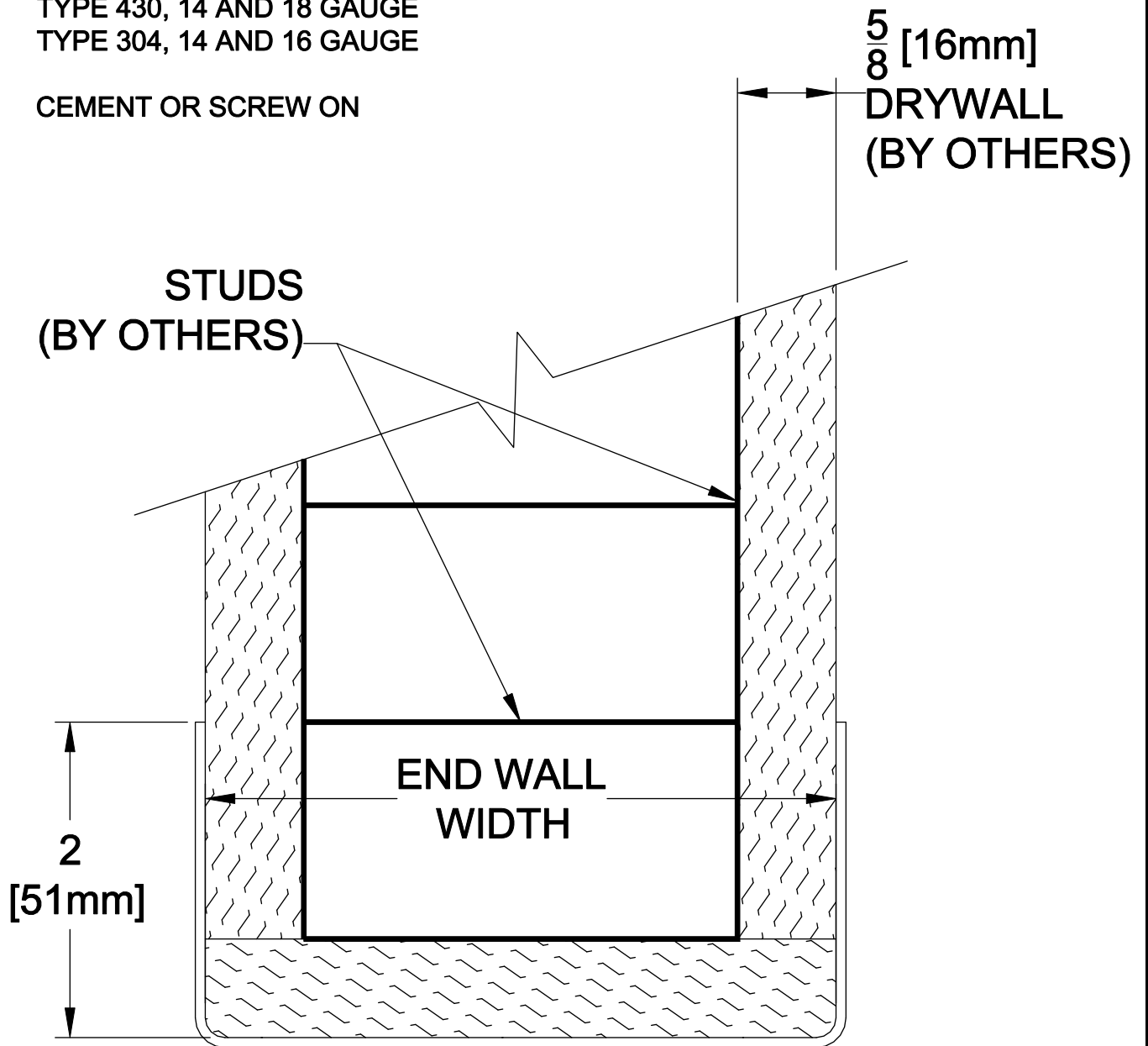


STANDARD:
TYPE 430, 16 GAUGE

AVAILABLE:
TYPE 430, 14 AND 18 GAUGE
TYPE 304, 14 AND 16 GAUGE

CEMENT OR SCREW ON



IPC
DOOR + WALL PROTECTION SYSTEMS

DATE: 2/15/10
SCALE: 1:1
DOC.CADIPC.195/rev1

Stainless Steel
End Wall
Protector

inpro.