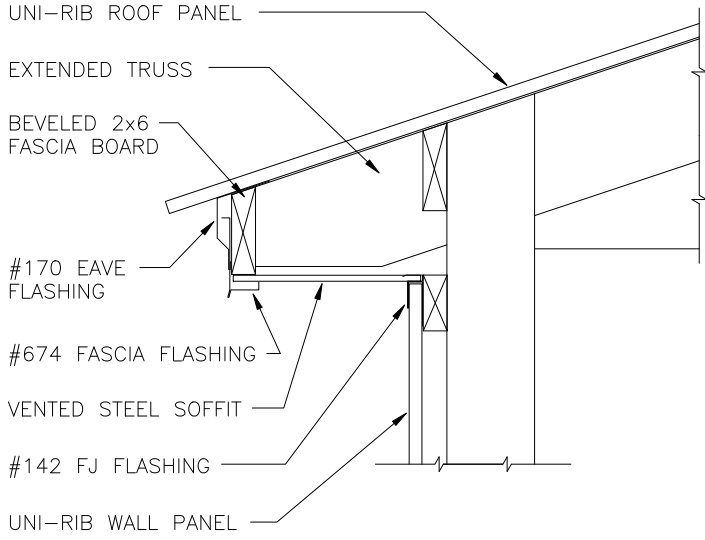
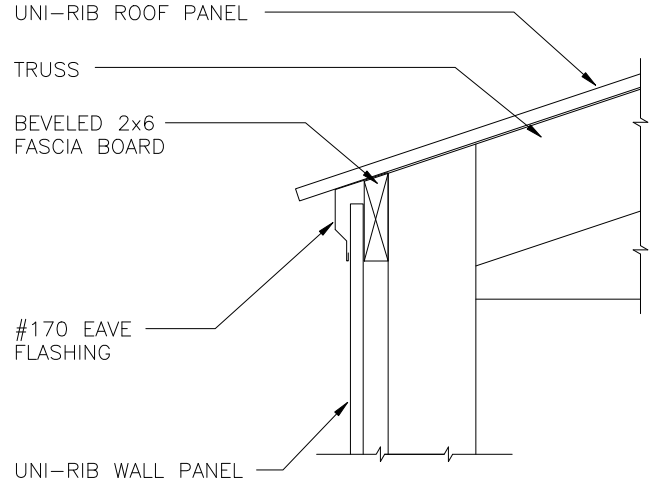


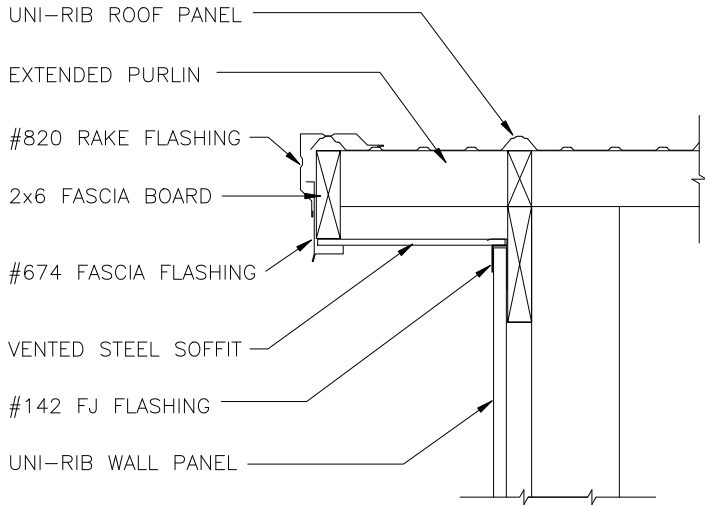
# Eave, Rake, & Ridge



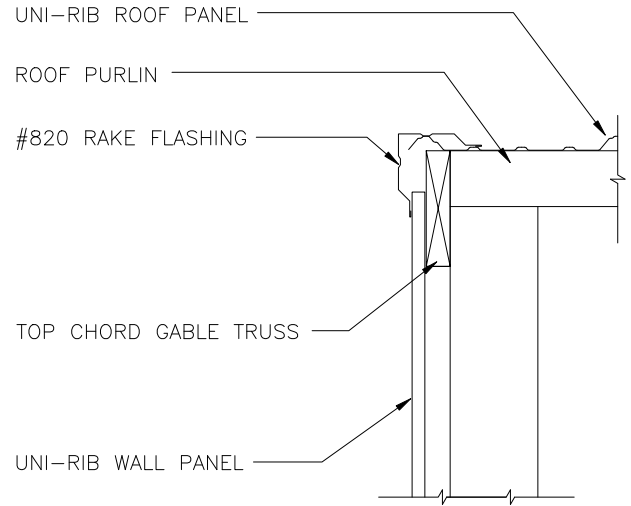
EAVE OVERHANG



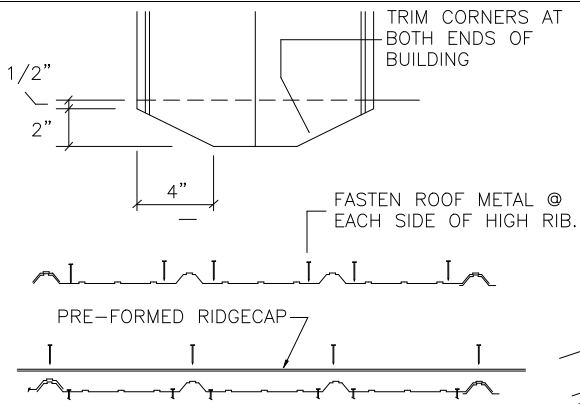
EAVE NO OVERHANG



RAKE OVERHANG



RAKE OVERHANG

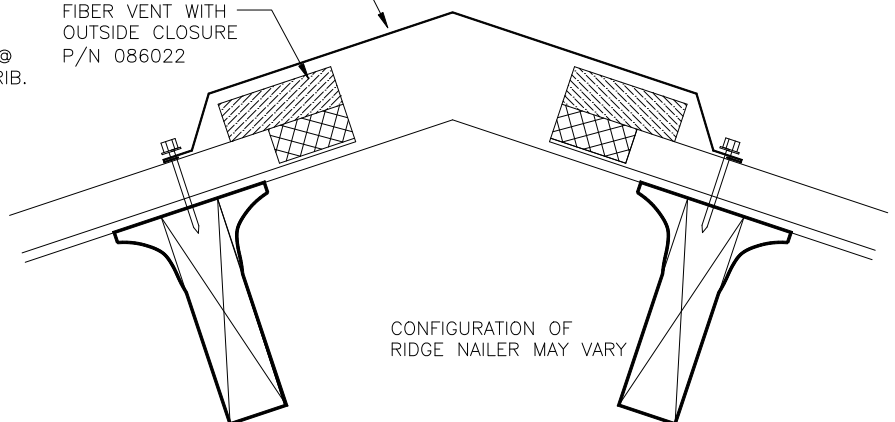


EDGE OF ROOF STEEL

RIDGE CAP/RIDGE LITE  
SEE CHART

FIBER VENT WITH  
OUTSIDE CLOSURE  
P/N 086022

NOTE:  
2 1/2" FROM TRUSS PEAK TO  
UPPER EDGE OF ROOF STEEL



CONFIGURATION OF  
RIDGE NAILER MAY VARY

ROOF SLOPE	RIDGECAP	P/N
< OR = 5/12	#152 TRIM	141152
GREATER THAN 5/12	#153 TRIM	141153

VENTED RIDGE