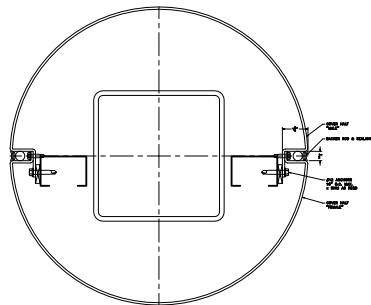
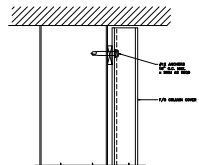


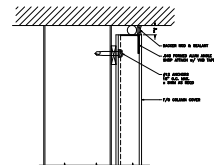
SAF Series M-2000 ALUMINUM  
VERTICAL JOINT DETAIL w/ FILLER



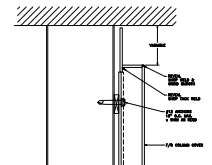
SAF Series M-2000 ALUMINUM  
VERTICAL COVER JOINT DETAIL



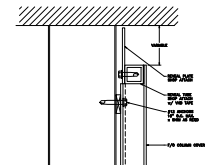
SAF Series M-2000 ALUMINUM  
CEILING/SOFFT DETAIL



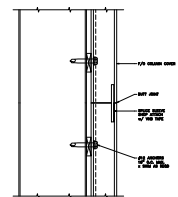
SAF Series M-2000 ALUMINUM  
CEILING/SOFFT DETAIL



SAF Series M-2000 ALUMINUM  
CEILING/SOFFT DETAIL  
THIS DETAIL NOT AVAILABLE ON ANODIZED COVERS

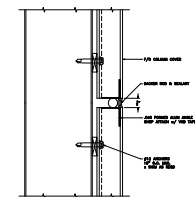


SAF Series M-2000 ALUMINUM  
CEILING/SOFFT DETAIL  
USE THIS DETAIL ON ANODIZED COVERS



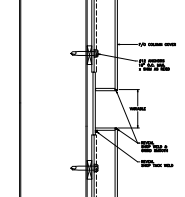
SAF Series M-2000 ALUMINUM  
STACK JOINT DETAIL

Note: This detail recommended for prefinished materials only. Full finishing will result in gaps of the frame due to warping.

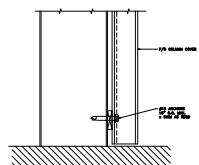


SAF Series M-2000 ALUMINUM  
STACK JOINT DETAIL

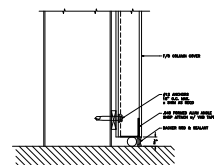
SAF recommends against a horizontal butt-joint on post-painted metal due to warping. We recommend installing with a horizontal coult joint as shown above.



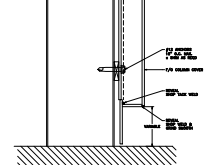
SAF Series M-2000 ALUMINUM  
STACK JOINT DETAIL  
THIS DETAIL NOT AVAILABLE ON ANODIZED COVERS



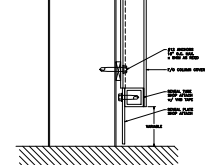
SAF Series M-2000 ALUMINUM  
BASE DETAIL



SAF Series M-2000 ALUMINUM  
BASE DETAIL



SAF Series M-2000 ALUMINUM  
BASE DETAIL  
THIS DETAIL NOT AVAILABLE ON ANODIZED COVERS



SAF Series M-2000 ALUMINUM  
BASE DETAIL  
USE THIS DETAIL ON ANODIZED COVERS