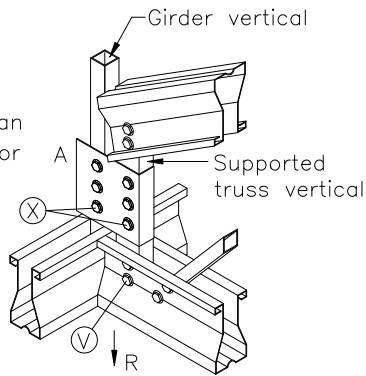


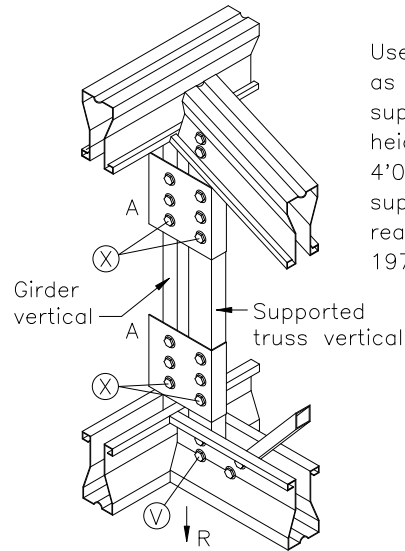
TRUSSTEEL TRUSS-TO-TRUSS CONNECTION

Use one clip as shown when supported truss height is less than 4'0" (1219mm) or supported truss reaction is less than 1976 lbs. (8.79kN)

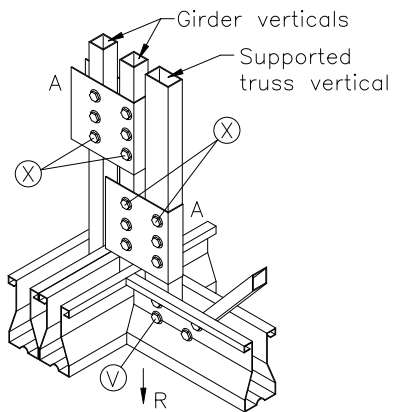


TRUSS-TO-TRUSS CONNECTION DETAIL
1-CLIP

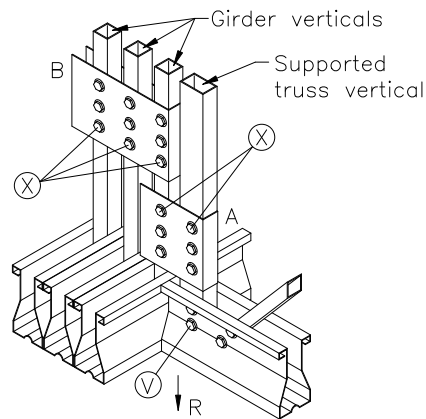
Use two clips as shown when supported truss height exceeds 4'0" (1219mm) or supported truss reaction exceeds 1976 lbs. (8.79kN)



TRUSS-TO-TRUSS CONNECTION DETAIL
2-CLIPS



GIRDER PLY-TO-PLY CONNECTION DETAIL
2 MEMBER



GIRDER PLY-TO-PLY CONNECTION DETAIL
3 MEMBER

(R) Maximum Reaction lbs. (kN)	Number of Clips	X
988 (4.39)	1	3
988 (4.39)	2	2
1482 (6.59)	1	4
1482 (6.59)	2	2
1976 (8.79)	1	5
1976 (8.79)	2	3
2470 (10.99)	1	N/A
2470 (10.99)	2	3

- X is number of #10 self drilling screws on each side of each clip in each web member.

TSC2.75 CHORD TRUSSES

- A - TTC3 Clip
- B - TTC5 Clip

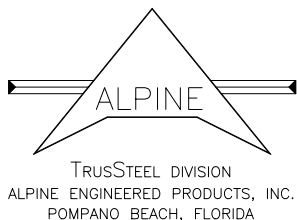
TSC4.00 CHORD TRUSSES

- A - TTC4 Clip
- B - TTC7 Clip

U-Clips are 20ga ASTM A653 SS grade 33.
Bare metal thickness is 0.0329" (0.84mm) min.

General Notes:

1. All screw spacings and edge distances shall not be less than 0.625" (16mm).
2. Each screw must be capable of resisting an allowable lateral load of 220 lbs. (0.98kN) minimum using the AISI specification provisions for screw connections set forth in a CCFSS technical bulletin (Vol. 2, No. 1).
3. A clip bearing must be used in TrusCad. This will ensure that screw quantity V is calculated properly.
4. R = reaction from TrusCad analysis.
5. Girder verticals must be 3/4" (19mm) x 3/4" (19mm) for TSC2.75 trusses or 1-1/2" (38mm) x 1-1/2" (38mm) for TSC4.00 trusses. If TrusCad analysis results show you need a bigger web, contact an Alpine engineer.
6. If supported truss verticals are larger than 3/4" (19mm) x 1-1/2" (38mm) for TSC2.75 trusses or 1-1/2" (38mm) x 2" (51mm) for TSC4.00 trusses, truss-to-truss clip must be a "B" clip.



****WARNING**** TRUSSES REQUIRE EXTREME CARE IN FABRICATING, HANDLING, SHIPPING INSTALLING AND BRACING. UNLESS OTHERWISE INDICATED, TOP CHORD SHALL HAVE PROPERLY ATTACHED STRUCTURAL PANELS AND BOTTOM CHORD SHALL HAVE A PROPERLY ATTACHED RIGID CEILING.

****IMPORTANT**** FURNISH A COPY OF THIS DESIGN TO THE INSTALLATION CONTRACTOR. BRACING DEPICTED ON THIS DESIGN IS ONLY FOR LATERAL SUPPORT OF TRUSS MEMBERS TO REDUCE BUCKLING LENGTHS. ALL DESIGN, ATTACHMENT AND INSTALLATION OF TEMPORARY AND PERMANENT BRACING, TO RESIST LATERAL FORCES AND HOLD TRUSSES PLUMB, SHALL BE THE RESPONSIBILITY OF OTHERS. ALPINE ENGINEERED PRODUCTS, INC. SHALL NOT BE RESPONSIBLE FOR ANY DEVIATION FROM THIS DESIGN OR HANDLING, SHIPPING, INSTALLING, AND BRACING OF TRUSSES. AN ENGINEER'S SEAL ON THIS DRAWING APPLIES ONLY TO DESIGN OF THE TRUSS DEPICTED HERE AND SHALL NOT BE RELIED UPON IN OTHER WAY.

TRUSSTEEL DETAIL
DATE 12/21/01
DRWG TS001
-ENG